

Welcome!

**2019
SART Planning
Conference**

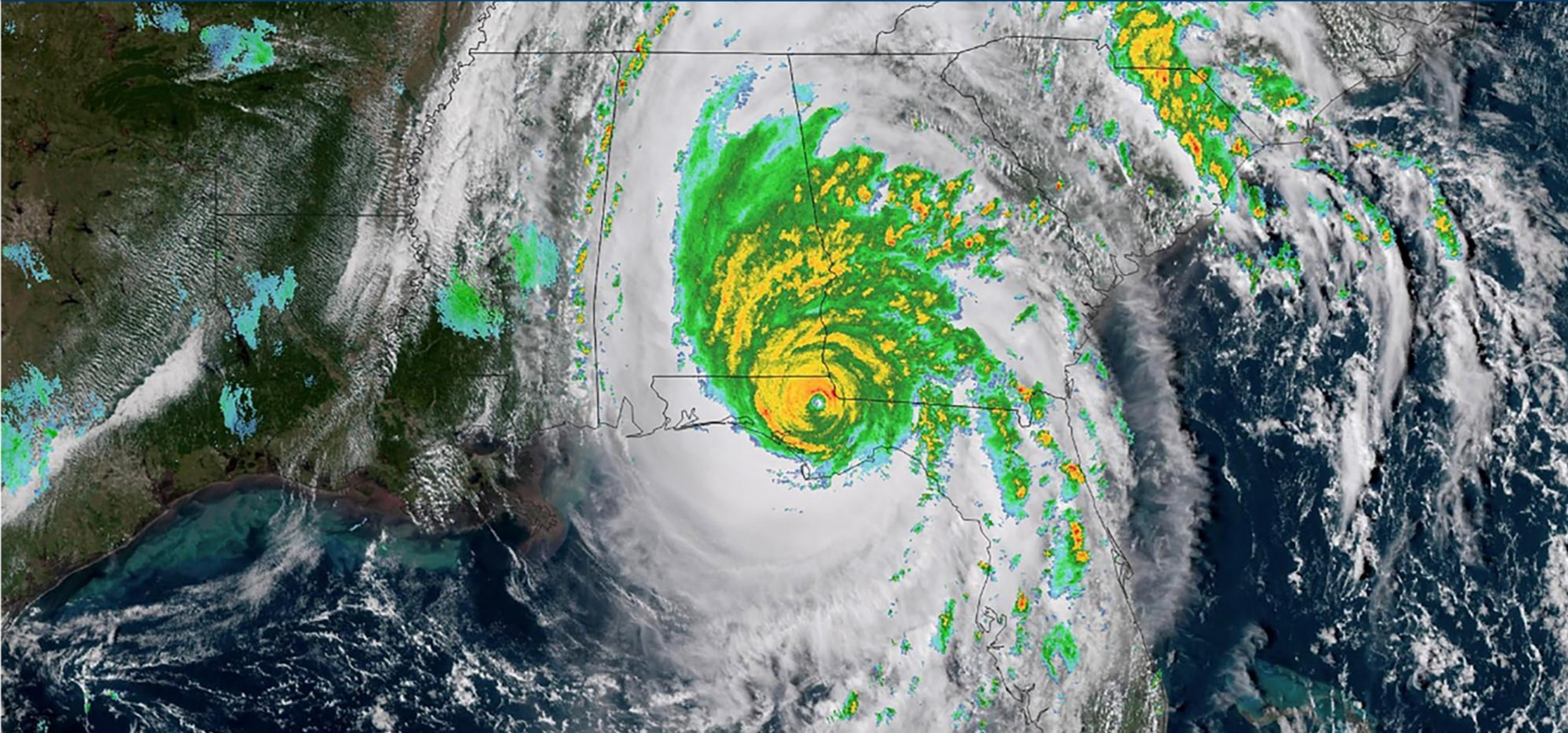


May 29 - 31, 2019

Hurricane Michael was the **third-most intense hurricane** to make landfall in the United States.



FEMA





















































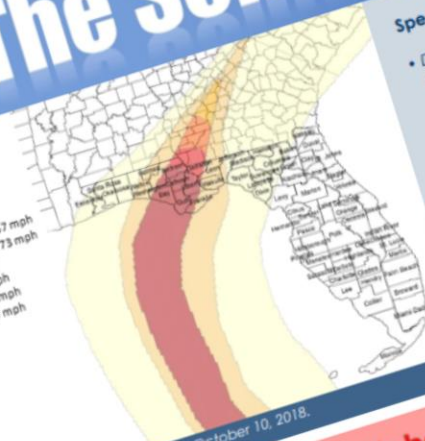
The Sentinel

Newsletter of
the Florida State
Agricultural
Response Team

Special Features of this Issue:

- DCF to Initiate Federal Disaster SNAP Food Assistance Program in 12 Counties
- Counties, Please Update Your Contact Information on FLSART.org
- FDA Commissioner Issues Statement on Findings from the Romaine Lettuce E. Coli Outbreak Investigation

Wind speeds
Tropical Storm: 39 – 57 mph
Cat. 1: 74 – 95 mph
Cat. 2: 96 – 110 mph
Cat. 3: 111 – 129 mph
Cat. 4: 130 – 156 mph



Hurricane Michael made landfall on October 10, 2018.

Special Edition: Hurricane Michael

ESF 17 and Florida SART Responds to Hurricane Michael

Hurricane Michael made landfall at Mexico Beach, Florida, just south of Panama City as a Category 4 hurricane on October 10. Hurricane Michael was the third-most intense Atlantic hurricane to make landfall in the United States.

It was also the strongest storm in terms of maximum sustained wind speed – recorded at 155 mph – to strike the United States since Andrew in 1992. In addition, it was the strongest storm on record in the Florida Panhandle.

In advance of the storm, Governor Rick Scott declared a state of emergency for 35 of Florida's 67

In the aftermath, at least 17 people died of storm-related accidents and more than 1.3 million homes and businesses were without power.

In this special edition of the SART Sentinel, we detail some of the actions taken by Emergency Support Function (ESF) 17 and the Florida State Agricultural Response Team to respond to the disaster.

ESF 17 and SART continue to support response and recovery efforts for Hurricane Michael.

See Hurricane Michael Response on page 3.

"[T]he most likely way the romaine lettuce became contaminated was from the use of water from [an] irrigation canal..."

— Scott Gottlieb
Commissioner of Food and Drugs
Department of Health and Human
Services
U.S. Food and Drug Administration
Story on page 12



***Florida SART Website
Sign up to become a
member...it's free!***

www.flkart.org



New World
Screwworm

Florida, 2017



Florida Key
Deer affected
by New World
Screwworm



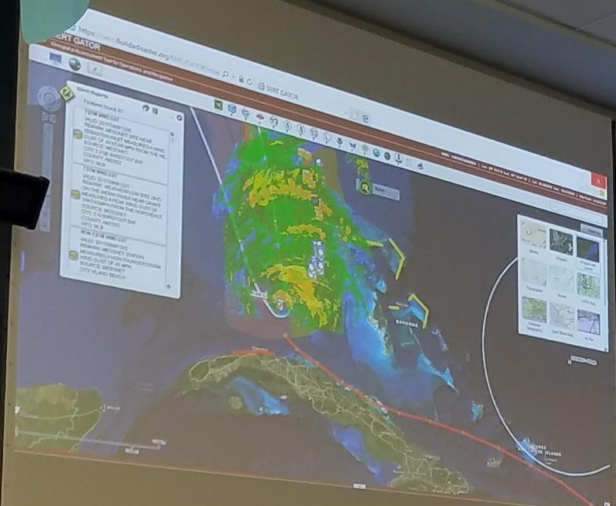




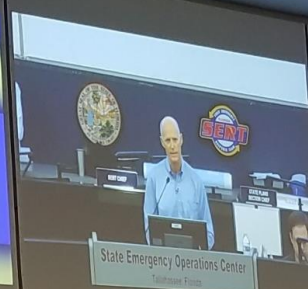




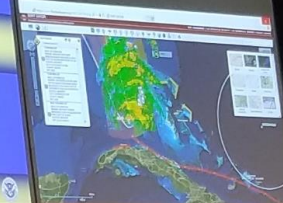




Governor
Rick Scott



Governor
Rick Scott



Primary Mission

FEDERAL ESF-8
SEARCH & RESCUE

STATE ESF-13
MILITARY SUPPORT

STATE ESF-8
HEALTH AND MEDICAL

FEDERAL ESF-8
HEALTH AND MEDICAL



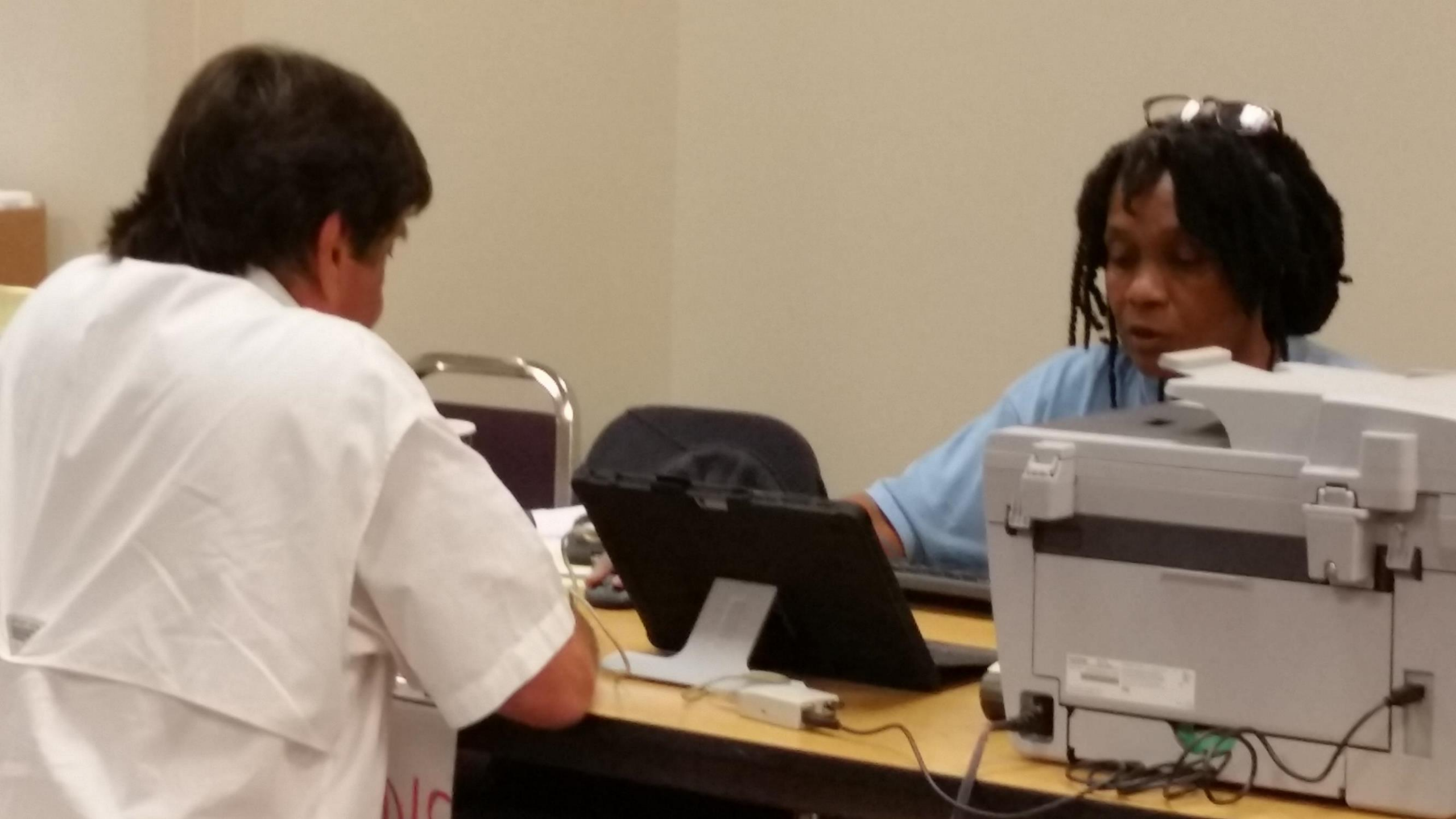














SART
Liaisons





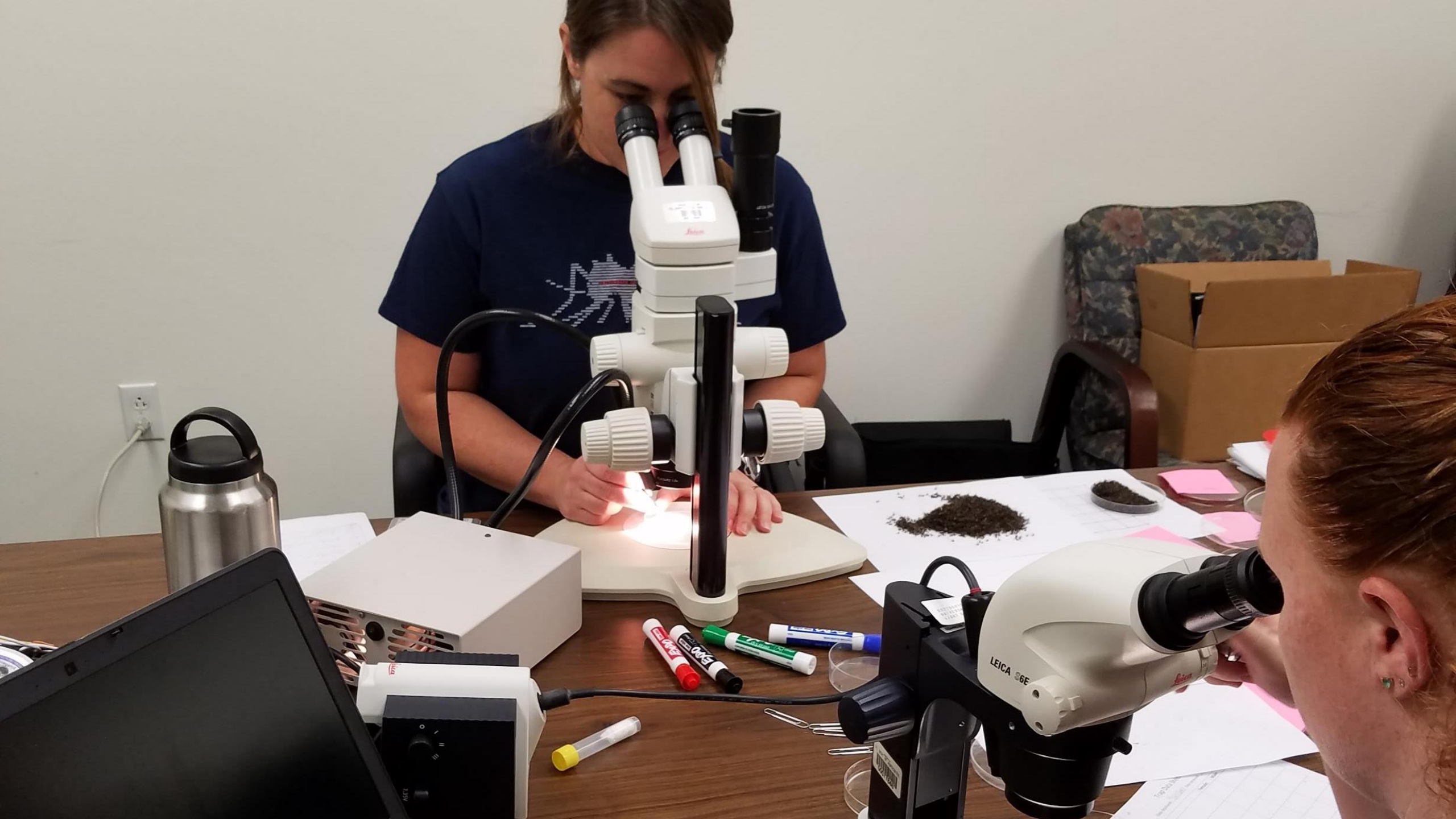
COWS RESCUED FROM FLOODED RANCH
OKEECHOBEE COUNTY



5:58 84°























Stat
Re

GOSPORT



FOOD
SAFETY

SELECT

80°
LOCAL 8
FORT MYERS
TODAY

81° Isolated
T Storms

30% Chance
of Rain



FINANCE-ADMIN
SECTION



12:36 PM
4/9/2019



**ZERO TOLERANCE
POLICY**

...of ...
...
...
...
...

...

...



THE BEST...
A CARING C...

DOPT! DONATE
Support Your County A...











GLADIATOR

HERNANDO COUNTY
ANIMAL SERVICES
PET FRIENDLY SHELTER

15039

Animal Services
Manager





NOTICE
adoption
and
information













Leon County Emergency Mobile Animal Shelter











STATE AGRICULTURAL RESPONSE TEAM
S. A. R. T.
FLORIDA
Agriculture



